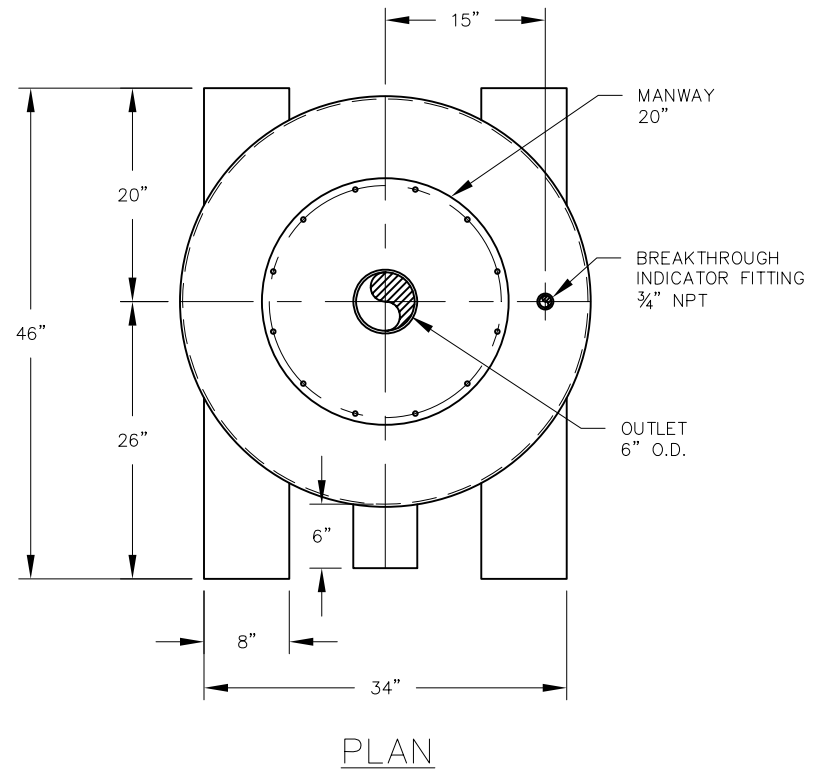


ELEVATION



PLAN

## VESSEL STANDARDS

VESSEL MATERIALS : A36 CARBON STEEL	LIQUID DRAIN ASSEMBLY : 1" HDPE PLUG
LINING : MULTI-PURPOSE EPOXY	VOLUME OF VESSEL : 40 FT <sup>3</sup>
EXTERIOR PAINT : ACRYLIC ALKYD ENAMEL	STANDARD CARBON FILL : 1000 LBS
HEAD THICKNESS : 3/16"	EMPTY WT. : 765
SHELL THICKNESS : 10 GA. STEEL	CARBON TYPE : VAPOR PHASE 4 X 10
INTERNALS : PLENUM	MAX. OPERATING PRESSURE : 1 PSIG
ADSORBENT OUTLET ASSEMBLY : 20" BOLTED MANWAY	MAX. OPERATING TEMP. : 140°F

1	REVISE VESSEL STANDARDS	JB	7/26/07
NO.	REVISION	BY	DATE
PROJECT		EV-1000	
PROJ. NO.	SALES		
P.O. NO.			
<small>THIS DRAWING AND DESIGN ARE THE PROPERTY OF TIGG CORP. AND SHALL NOT BE REPRODUCED IN WHOLE OR IN PART, NOR EMPLOYED FOR ANY PURPOSE OTHER THAN SPECIFICALLY PERMITTED IN WRITING BY TIGG CORP. THIS DRAWING LOANED SUBJECT TO RETURN ON DEMAND.</small>			
DRAWN BY	JB		
DESIGN BY	BB		
CHKD. BY	BB		
DATE	1/4/07	DWG. NO.	EV-1000-1001
SCALE	NTS	REV.	1



PLAN & ELEVATION